

Economic Impact of Health

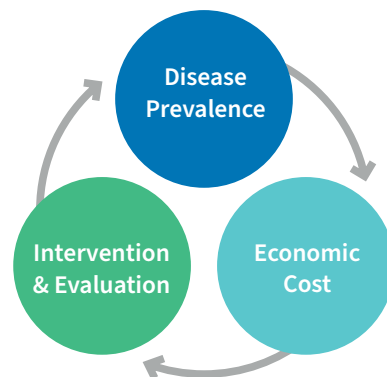
Providing customized data for improving health & economic well-being

Economic prosperity and health are linked. Poor health challenges vitality and growth and reduces quality of life. Chronic conditions such as diabetes or hypertension contribute to increased utilization, medical and productivity costs, and losses for businesses and communities. Many business, civic and government leaders and local coalitions lack the critical data to evaluate drivers, diagnose issues, set priorities and assess solutions and returns from action.

Disease Prevalence: FTI's Center leverages extensive demographic and prevalence data to provide deep, comparative health analytics on chronic conditions in local and peer cities.

Economic Costs: With commercial and government claims data and evidence-based proprietary models, we evaluate workforce healthcare utilization costs and quantify economic costs from lost workplace productivity (presenteeism and absenteeism).

Intervention & Evaluation: Our experienced professionals combine data science with customizable scenario modeling, informatics analysis and experience with collaboratives to evaluate interventions and their effects.



— PEER CITIES

FTI Consulting houses a rich collection of health and economic data to provide insights for many metro areas. This access and experience with extensive commercial and government claims data, CDC BRFSS SMART, and other health, economic and workforce data permit peer city comparisons and customizable modeling.

Prevalence

BRFSS SMART

CENTERS FOR DISEASE CONTROL AND PREVENTION

Productivity Costs

BLS & Literature

BUREAU OF LABOR STATISTICS
U.S. DEPARTMENT OF LABOR

Life Expectancy

IHME County Profiles

IHME

Medical Costs

IBM® MarketScan® Databases

IBM Watson

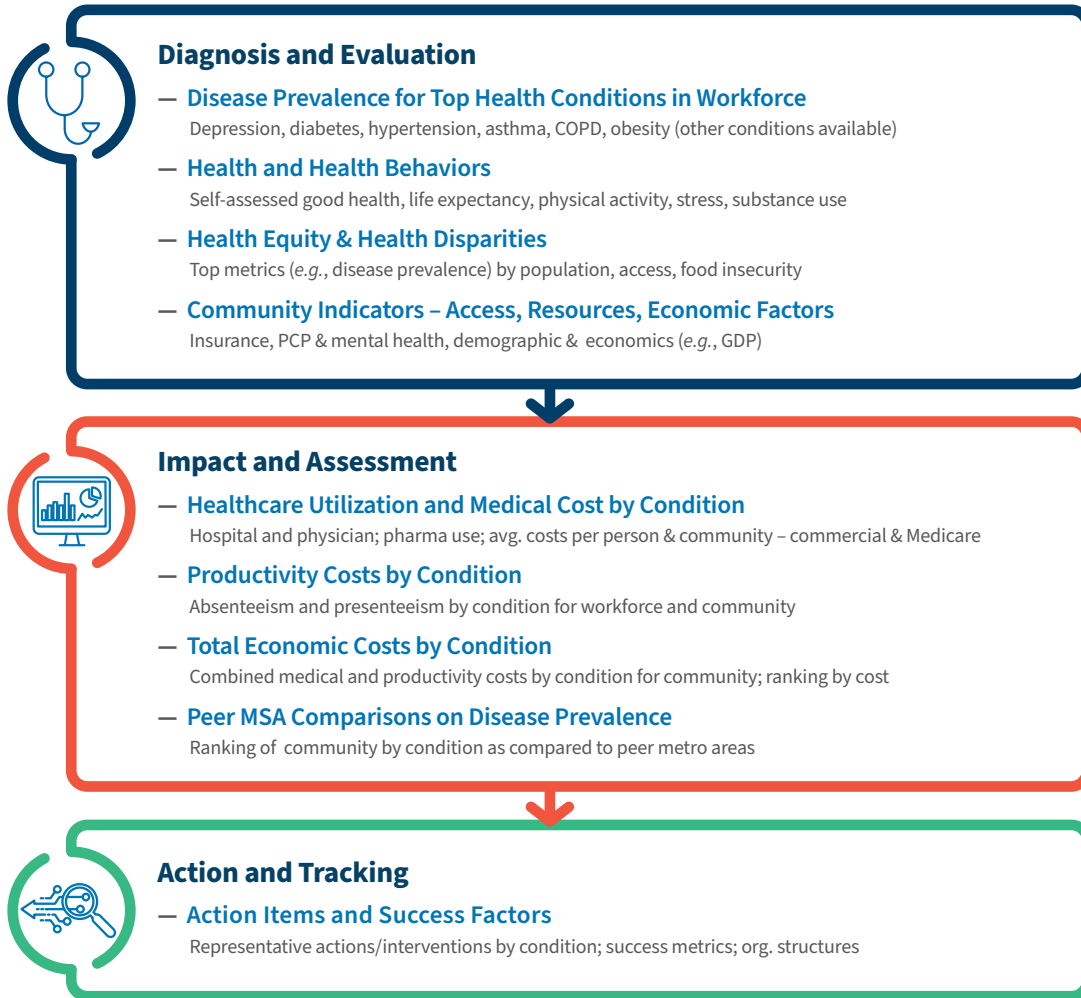


We track up-to-date prevalence data for disease conditions (e.g., hypertension, diabetes) for over 140 MSAs; enabling us to inform city leaders where they rank on workforce health compared to peer cities or national data and the benefits of actions to improve health or reduce economic impact.

Quantifying the Economic Impact on Health

FTI’s Center recognizes the importance of actionable, locally relevant data to identify drivers, impact, actions and returns from improving a community’s health and economic well-being. We work with business and community leaders and use proprietary models to quantify chronic condition prevalence and medical and productivity costs, to assess health equity and disparities, and to develop sound economic and health metrics for each community. We consolidate these key performance indicators and action items in customized dashboards to support awareness, priorities, interventions and benefits of action by local business, civic or government leaders and their coalitions.

METRO AREA HEALTH DASHBOARD



For more, see [FTI Center’s Nashville Region Health Competitiveness Initiative report](#).

The views expressed herein are those of the author(s) and not necessarily the views of FTI Consulting, Inc., its management, its subsidiaries, its affiliates, or its other professionals.

MARGARET GUERIN-CALVERT

Senior Managing Director
202.589.3451
margaret.guerin-calvert@fticonsulting.com

DENISE H. CLAYTON

Managing Director
919.749.7163
denise.clayton@fticonsulting.com

RUCHA KULKARNI

Director
202.589.2376
rucha.kulkarni@fticonsulting.com