

Center for Healthcare Economics and Policy

Health Competitiveness Research

Why health competitiveness research matters

Business and civic leaders require actionable data and analytics on their workforce and community health characteristics and the economic costs of chronic disease conditions to evaluate and set priorities for change.

QUESTIONS WE ANSWER

- What is the impact of health on your community's people, economy & competitiveness?
- How does your community compare with other cities?
- What is working?
- What are priorities for change?

Our unique approach

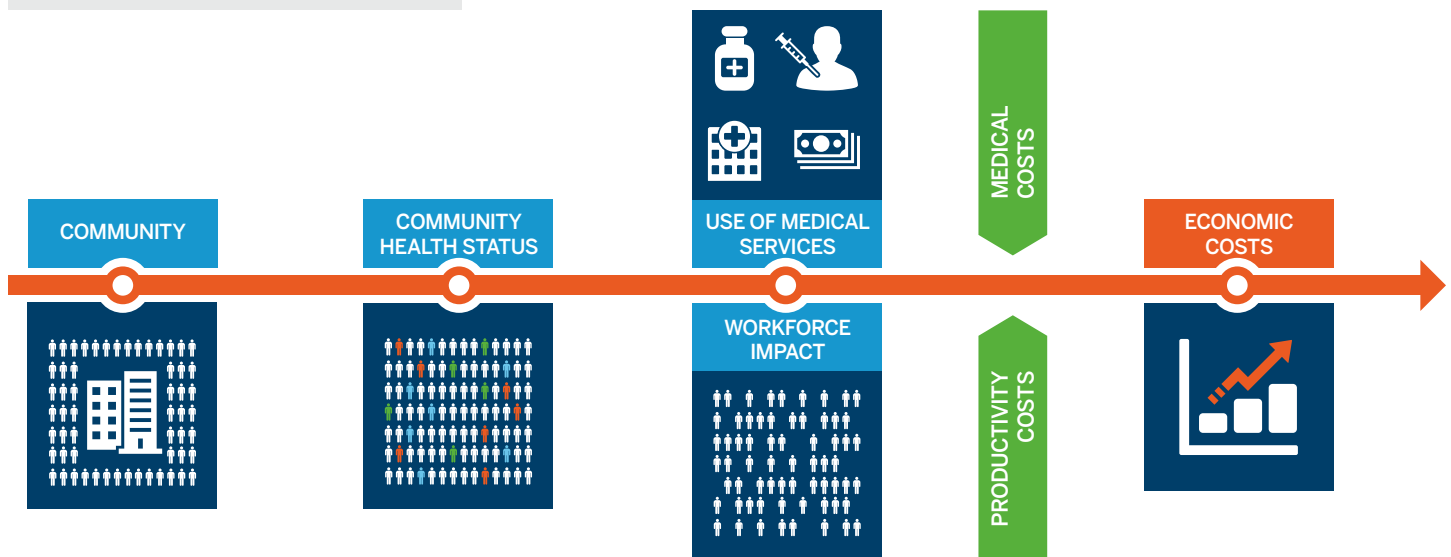
We combine **unique proprietary models** with extensive commercial claims*, demographics and health data **tailored to each community and workforce** to:

Profile each community's health characteristics

Quantify costs from worker absenteeism and lost productivity

Quantify medical service use and costs for chronic conditions

Evaluate well-being, resources and access to healthcare



Partnering with FTI Consulting

We believe that addressing **the significant economic and well-being costs of health** in our nation's communities requires clear understanding of their drivers and effects in a community. Working with businesses and stakeholders, we provide research and quantification of the productivity and medical costs of disease conditions in a community.

Leveraging cutting-edge methodologies, actionable metrics and economic analytics applied to the issues of each community, we support leaders to facilitate community-based transformation strategies.

To learn more about the economic cost of health conditions and FTI Consulting's customizable model and approach, please contact **Meg Guerin-Calvert** at meg.guerin-calvert@fticonsulting.com.

Center for Healthcare Economics and Policy

Health Competitiveness Research

Case Study: Assessing Nashville's Health Competitiveness

THE CHALLENGE

The Nashville Area Chamber of Commerce and a multi-stakeholder collaboration sought to understand health and healthcare costs in the Nashville Region; and their drivers and impact on community and workforce vitality and competitiveness.

OUR ROLE

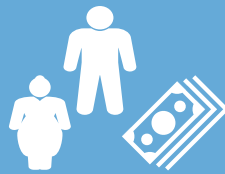
FTI Consulting's research provided a comprehensive profile and assessment of Nashville's disease conditions and risk factors (e.g., diabetes, hypertension, obesity, smoking) and their economic impact on the Nashville community and workforce – and a comparison to Nashville's 10 peer cities.

IMPACT

- We quantified economic costs and annual productivity costs in Nashville that exceeded \$500 million for diabetes, hypertension and obesity alone.
- Our research helped the Chamber to make the case about the costs of health and well-being for their community – and the importance of action.

To learn more, view the Nashville Region Health Competitiveness Initiative: 2017 Report. (link: <http://www.fticonsulting.com/insights/reports/fti-nashville-area-chamber-healthcare-competitiveness-initiative-2017-report>)

Based on the Health Competitiveness Work, the Chamber found:



Obesity-related productivity losses cost Nashville nearly a **quarter of a billion dollars** each year.



By **2030**, Nashville is estimated to see an economic impact of **\$43 million** annually due to estimated public **health impacts from traffic** congestion.



Over **\$500 million** lost annually in productivity for the Nashville region due to absenteeism associated with **diabetes obesity and hypertension** in the workforce.

Source: Nashville Chamber Blog, <https://www.nashvillechamber.com/blog/2018/can-you-really-improve-your-employees-health>

About the Center for Healthcare Economics and Policy

The Center for Healthcare Economics and Policy leverages cutting-edge methodologies, actionable metrics and economic analytics to facilitate organizational and community-based healthcare transformation strategies and initiatives. Our experts include PhD economists and experienced healthcare professionals with extensive knowledge of healthcare economics, disease conditions, and state-of-the-art modeling. We help clients including employers, providers, governments and community organizations design and achieve implementable solutions grounded in robust data analysis to improve healthcare delivery.

OUR SENIOR STAFF

Meg Guerin-Calvert
Senior Managing Director
+1 202 589 3451
margaret.guerin-calvert@fticonsulting.com

Susan Manning, Ph.D.
Senior Managing Director
+1 202 589 3458
susan.manning@fticonsulting.com

Jeremy Nighohossian, Ph.D.
Managing Director
+1 202 589 2389
jeremy.nighohossian@fticonsulting.com

Jen Maki, Ph.D.
Managing Director
+1 602 744 7157
jen.maki@fticonsulting.com

ADVISORY BOARD

Michael W. Cropp, M.D.
Chair
President & CEO,
Independent Health

Melinda Buntin, Ph.D.
Board Member
Professor and Chair, Dept. of
Health Policy, Vanderbilt
University School of Medicine

George J. Isham, M.D.
Board Member
Senior Advisor and Senior Fellow,
HealthPartners, Institute for
Education & Research

Bill Purcell
Board Member
Attorney at Law,
Farmer Purcell White
& Lassiter, PLLC

About FTI Consulting

FTI Consulting, Inc. is a global business advisory firm dedicated to helping organizations protect and enhance enterprise value in an increasingly complex legal, regulatory and economic environment. FTI Consulting professionals, who are located in all major business centers throughout the world, work closely with clients to anticipate, illuminate and overcome complex business challenges in areas such as investigations, litigation, mergers and acquisitions, regulatory issues, reputation management and restructuring. www.fticonsulting.com